

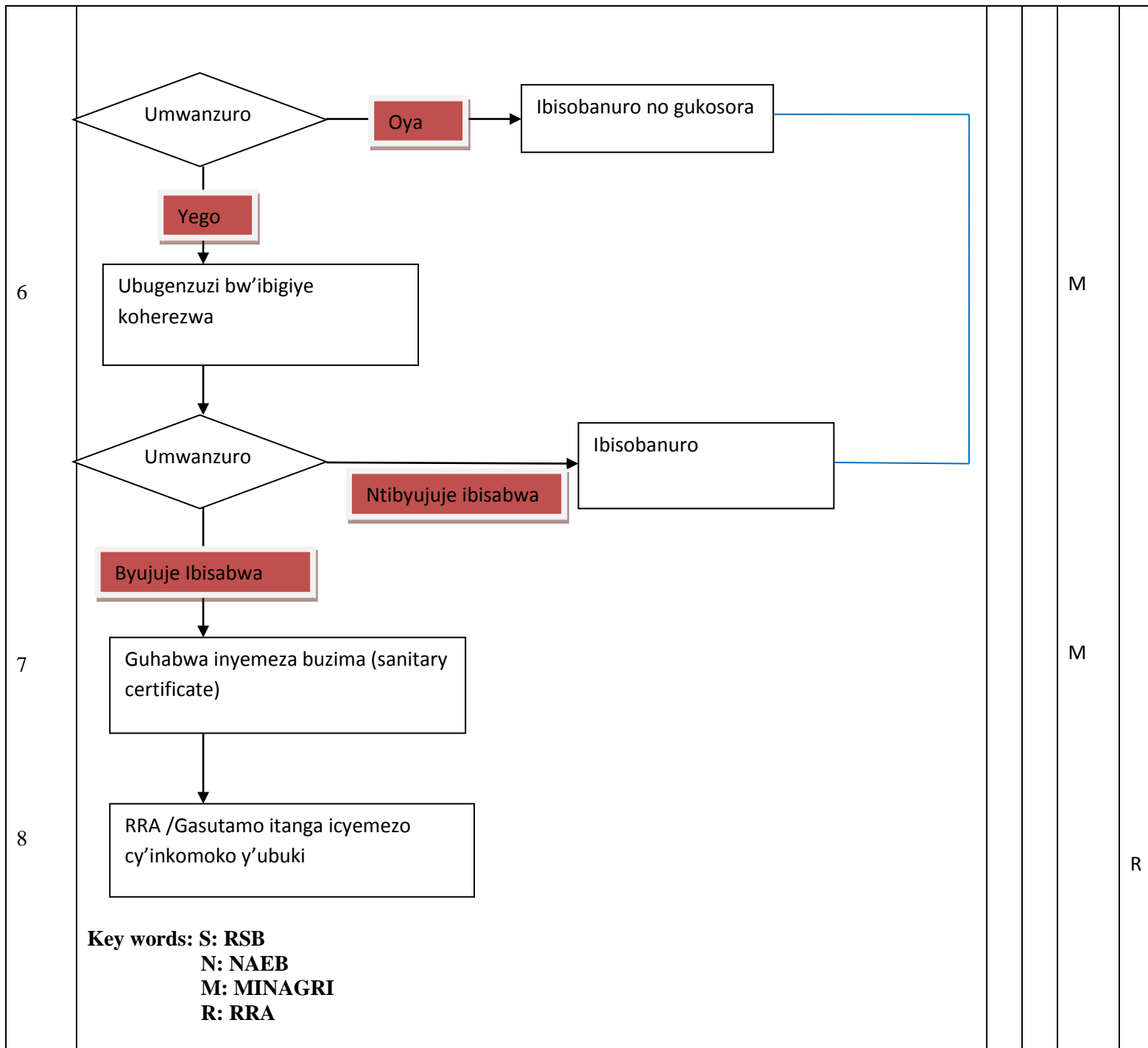


## INZIRA YO KUGEZA UBUKI KU ISOKO MPUZAMPAHANGA

<p>Inzira yo kugeza ubuki ku isoko mpuzamahanga</p>	<p><b>Doc. No:001</b> <b>Revision No 00</b> <b>Date of issue: 08 2015</b> <b>Issued by: RALIS</b></p>
<p><b>1. IMPAMVU:</b> Gushyiraho umurongo ngenderwaho mu rwego rwo kugirango ubuki bw'u Rwanda bugere ku isoko mpuzamahanga bugifite ubuziranenge nyabwo.</p> <p><b>2. IMBAGO Z'AYAMABWIRIZA:</b></p> <ul style="list-style-type: none"> <li>- Iyi nyandiko yerekana incamake y'inzira yo kugeza umusaruro w'ubuki n'ibibukomokaho ku isoko mpuzamahanga: Kuva ku ruvumvu kugera ubuki bugeze ku isoko;</li> <li>- Iyi nyandiko iribanda ku mikoranire y'abashaka kugeza umusaruro w'ubuki n'ibibukomokaho ku isoko mpuzamahanga n'ibigo bya leta bifite mu nshingano kubafasha kubahiriza ibisabwa.</li> </ul> <p><b>3. IBYIFASHISHIJE:</b></p> <ul style="list-style-type: none"> <li>- Amabwiriza y'ubuziranenge ku migenzo rusange irebana n'isuku y'ibiribwa (Code of Hygienic Practices, general principles of Food Hygiene, 1969 Rev. 4-2003);</li> <li>- Amabwiriza y'ubuziranenge bw'ubuki rijyanye n'imicungire y'ubuvumvu (Code of practice for apiary management, handling and processing of bee-products, RS 153:2012)</li> <li>- RS 164:2007; Amabwiriza y'ubuziranenge bw'ubuki</li> <li>- Itegeko N° 25/2013 ryo kuwa 10/05/2013 rigena imitunganyirize n'imikorere y'ubuvumvu mu Rwanda</li> <li>- Itegeko No 36/2012 ryo kuwa 21/9/2012 rigenga ihiganwa mu bucuruzi no kurengera abaguzi</li> <li>- Itegeko No 47/2012 ro kuwa 14/01/2013 rigenga imicungire n'igenzura ry'ibiribwa n'imiti</li> <li>- Ibisabwa mu gutanga inyemezabuzima (Sanitary requirements)</li> </ul> <p><b>4. INYITO Y'AMAGAMBO:</b> - ubuvumvu ni imimirimo yose ijyanye no kwagika no gucunga uruvumvu, guhakura, no gutunganya ubuki.</p> <ul style="list-style-type: none"> <li>- inyemezabuzima: icyangombwa kigaragaza ubuziranenge bw'ibicuruzwa bikomoka ku matungo.</li> </ul>	

### 5. Uruhererekane rw'ibisabwa kubahirizwa mu bucuruzi mpuzamahanga bw'ubuki

S/N	Ibigomba gukorwa	Ababishinzwe			
1		R S B	N A E B	MIN AGR I	R R A
2		S	N		
3				M	
4		S		M	
5					



Ku Bifuzwa ibisobanuro birambuye: bahamagara kuri: **4127** cyangwa bakohereza ubutumwa kuri aderesi email ikurikira: [infoinspection@minagri.gov.rw](mailto:infoinspection@minagri.gov.rw)